

Hail, Farewell



MISS DOUGLAS, ACTRESS, DIES

"The play must go on!"

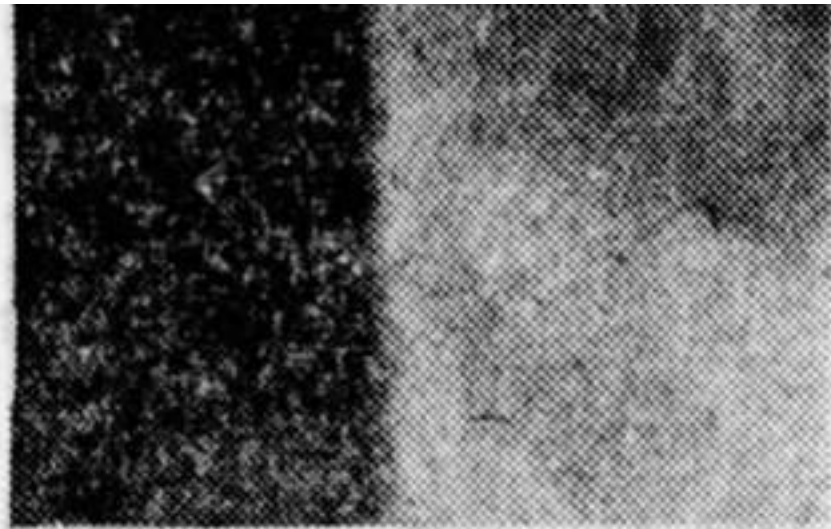
That time-honored tradition of the theater, which brooks no interruptions on the stage though tragedy stalk in the wings, was sadly exemplified yesterday in the death of Blanche E. Douglas.

Miss Douglas, a widely known actress, had played a leading role in "The Spite Corner" at the President Theater until last Thursday. On Tuesday she had developed a serious infection in one of her eyes.

In vain her friends and associates urged her to give up her part and go to a hospital for needed medical attention. "The play must go on!" she quoted, and insisted upon remaining in the role until the close of the engagement last night.

On Thursday she became too ill to "carry on" any longer. She was rushed to St. Mary's Hospital and a substitute placed in her part. She died yesterday.

Miss Douglas was the widow of Harrington Reynolds, well known actor. Her son is Douglas Reynolds, also an actor, now playing in the East. Also surviving her are two sisters, Mrs. Clara E. Westerfeld and Mrs. Lillian D. Chicks, 1053 Hubert road, Oakland.



THE SHOW is over. Blanche Douglas, who died here yesterday. She was the widow of Harrington Reynolds.

The San Francisco Examiner

San Francisco, CA
Sunday, April 21, 1929

Page 11, Columns 2 & 3